

# ZONE FOR SILVERTON

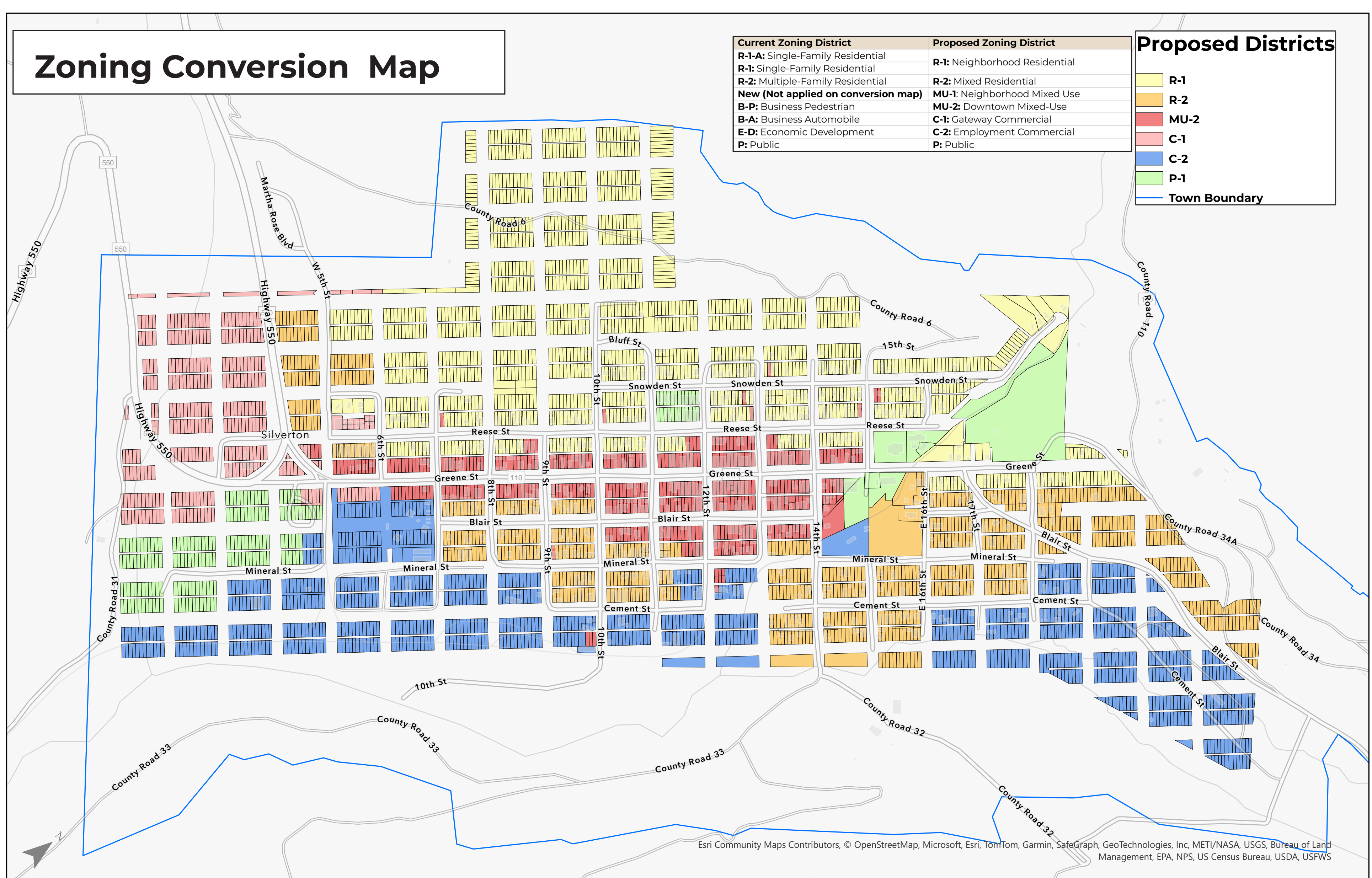
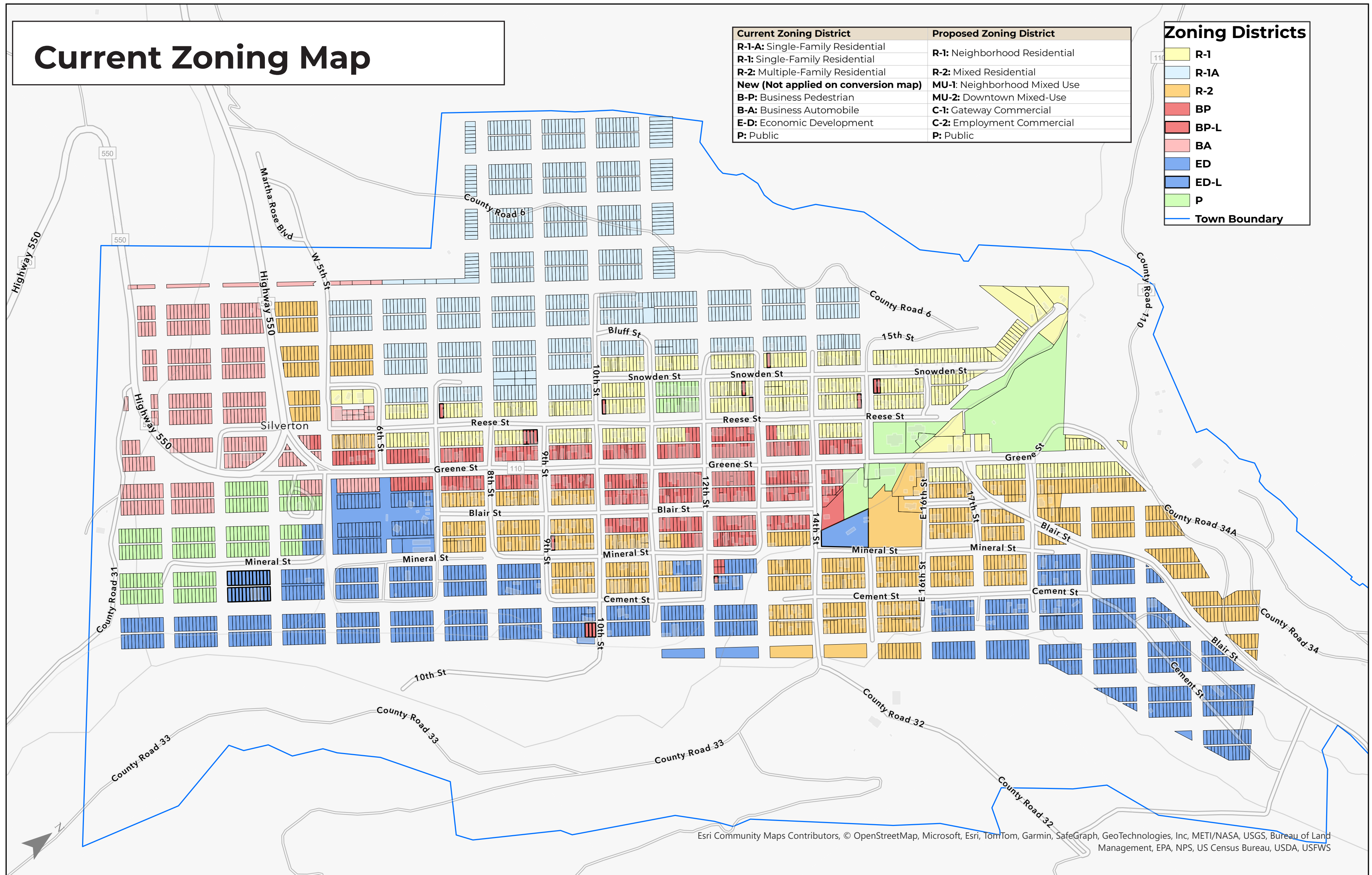


## SILVERTON LAND USE CODE

Moving the Compass Plan into Action

The Silvertown Land Use Code Update (LUC) is a community led project to update the LUC and Silvertown Zoning map to the updated zoning districts. This activity is designed to allow you to explore the proposed zoning district conversions on the Town's zoning map. Below you will find a current zoning map that reflects the existing zoning districts in the Town and following that map is a comparison map using the new proposed districts. Zoom in to the document to explore more.

The draft recommends a new MU-1 (Mixed-Use Neighborhood) district that does not have a one-to-one district conversion with an existing zoning district meaning it does not yet appear on the Zoning Conversion Map. This district is a potential option for several of the Mixed-Use Opportunity Areas highlighted on the next page. To read more about the dimensional standards and allowed uses in each district, see Tables 15-2-3: Zoning District Dimensional Standards Summary and 15-3-1: Use Table in the Full Draft of the LUC.



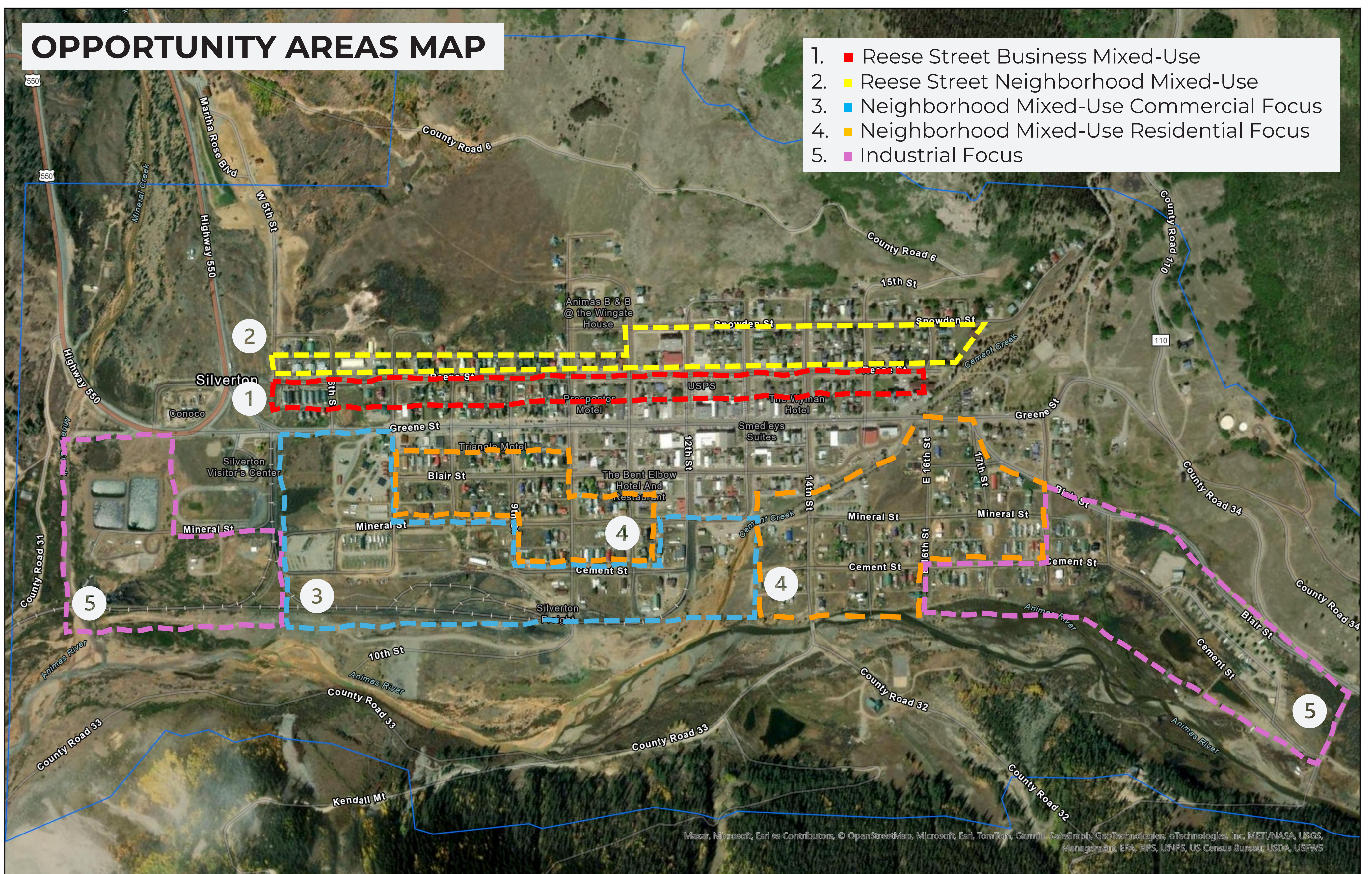
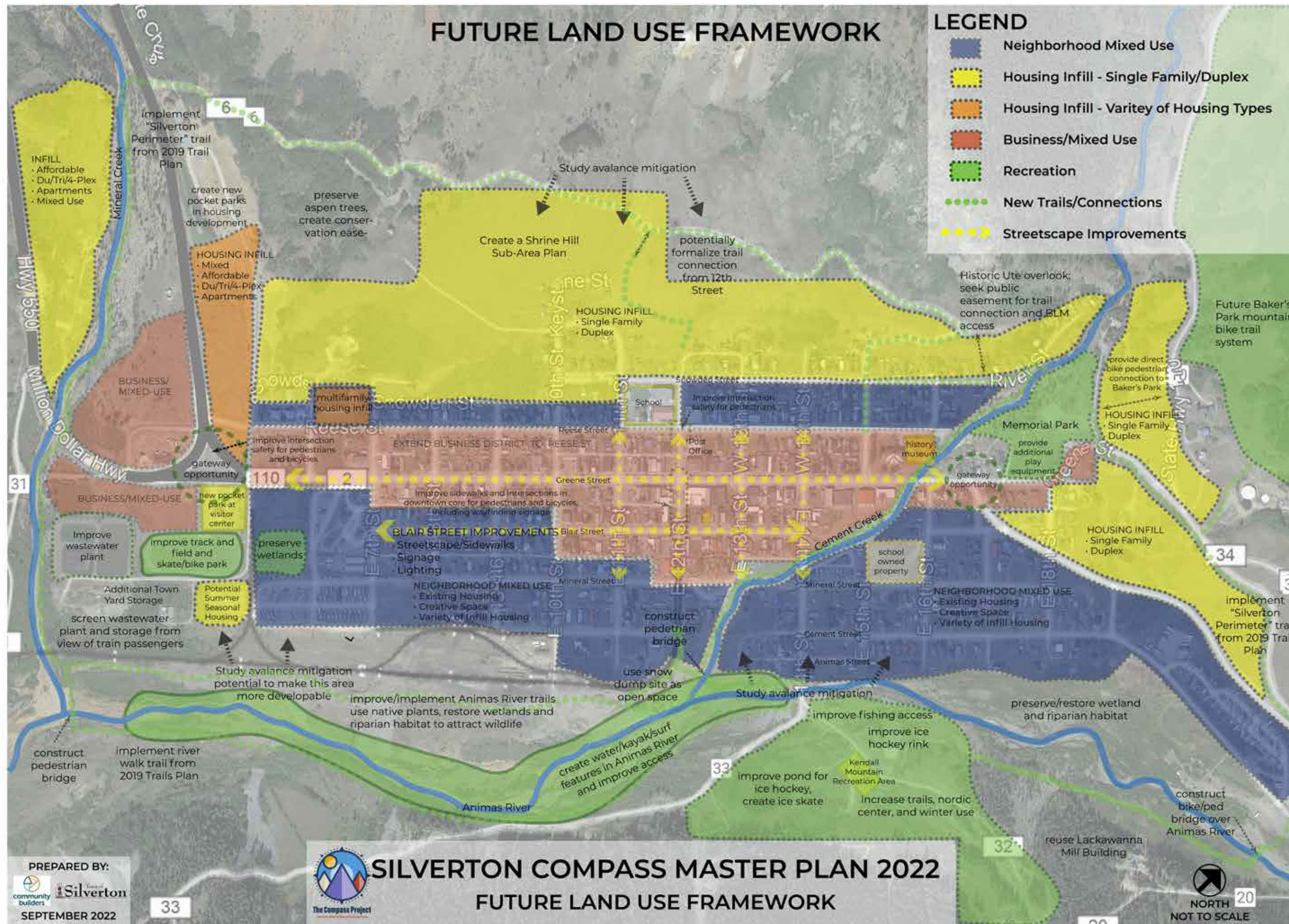
# ZONE FOR SILVERTON



**SILVERTON LAND USE CODE**  
Moving the Compass Plan into Action

The Compass Master Plan includes a Future Land Use Framework map that sets the vision for development and land use in Town. The zoning districts within the LUC are intended to implement that vision. Based on a comparison of the current Zoning Map and Future Land Use Framework, the project team has identified five opportunity areas in which additional feedback and direction from Town residents is necessary to inform potential zoning changes.

Please explore the provided maps and take the survey (accessible through the project website homepage) to provide your feedback.



[silvertownluc.org](http://silvertownluc.org)

